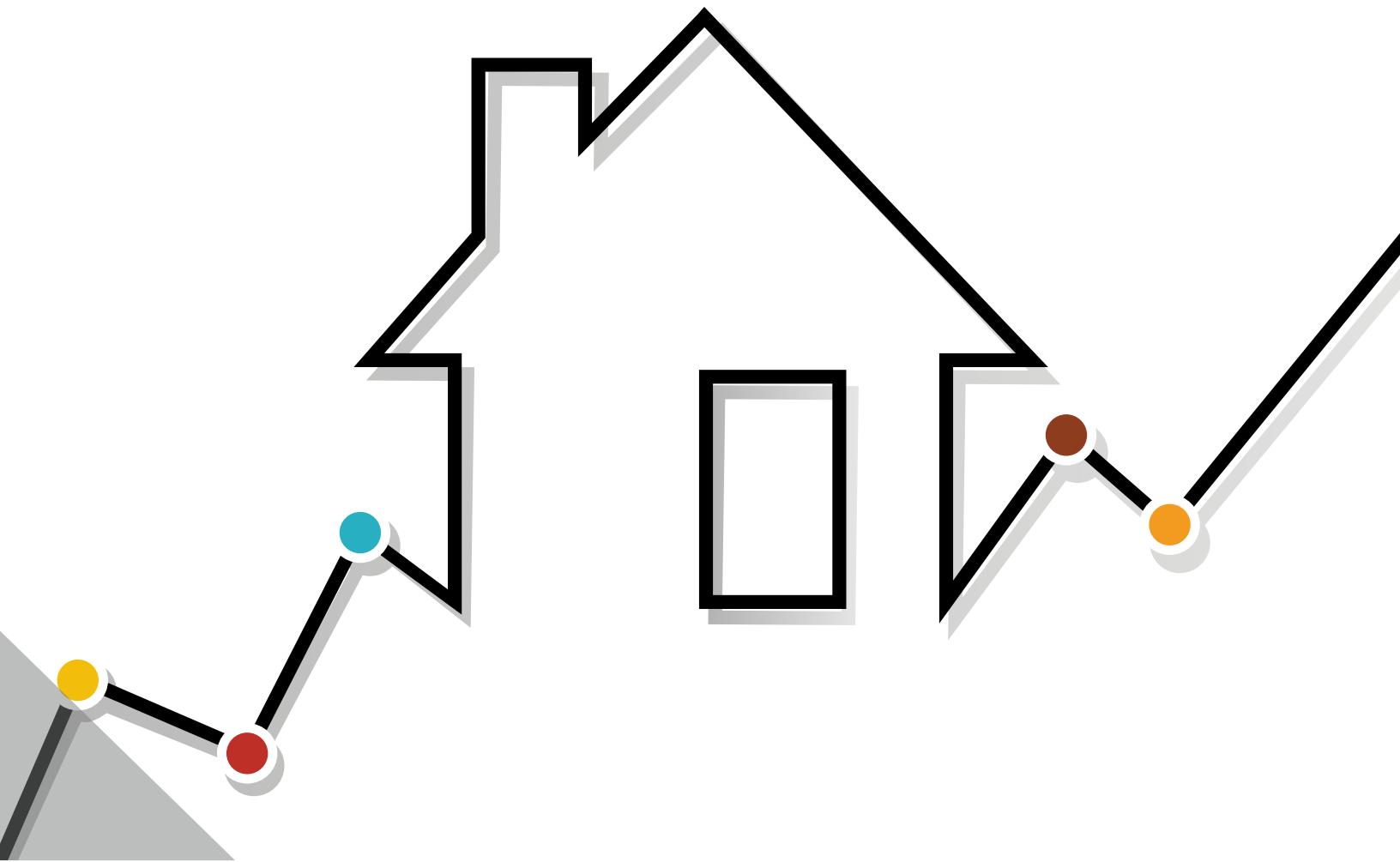


CEPro **ADVANTAGE** SERIES



CE PRO 100 2017
REVENUES GROW 24% IN 2016



CE COVER STORY

41-60



RANK	VERIFIED	COMPANY	CITY	CE PRO 100 REVENUES	RESIDENTIAL INSTALLS	REVENUE/INSTALL	FULL-TIME EMPLOYEES (AVG. 2016)	REVENUE/EMPLOYEE	2017 BUSINESS OUTLOOK
41	v	Automation Integration	Celina, Texas	\$6,000,000	60	\$100,000	15	\$400,000	Up 20%
42	v	Audiotronics	Roanoke, Va.	\$5,899,215	235	\$25,103	48	\$122,900	Up 10%
43	v	Structured Cable of VA	Richmond, Va.	\$5,676,702	1,667	\$3,405	23	\$246,813	Up 15%
44	v	Habitech Systems	Ormond Beach, Fla.	\$5,636,000	1,854	\$3,040	28	\$201,286	Up 5%
45	v	Bekins	Grand Haven, Mich.	\$5,617,205	100	\$56,172	90	\$62,413	Up 10%
46	v	Maxicon	Miami, Fla.	\$5,200,000	80	\$65,000	30	\$173,333	Up 7%
47	v	AVDinc	Mission Viejo, Calif.	\$5,191,935	150	\$34,613	25	\$207,677	Up 15%
48	v	Audio Visual Design Group	San Rafael, Calif.	\$5,000,000	25	\$200,000	90	\$55,556	Up 20%
49	v	Sound & Vision	Cuyahoga Falls, Ohio	\$4,994,381	500	\$9,989	18	\$277,466	Up 15%
50	v	Republic Elite Integration	Sacramento, Calif.	\$4,985,000	2,500	\$1,994	35	\$142,429	Up 45%
51	v	Liberty Bell Smart Home	Sacramento, Calif.	\$4,911,931	1,654	\$2,970	35	\$140,341	Flat
52	v	Residential Systems, Inc. (RSI)	Lakewood, Colo.	\$4,900,000	110	\$44,545	24	\$204,167	Up 10%
53	v	Logic Integration	Lone Tree, Colo.	\$4,842,730	42	\$115,303	30	\$161,424	Up 20%
54	v	Innovative Sight & Sound	Santa Rosa Beach, Fla.	\$4,700,000	150	\$31,333	22	\$213,636	Flat
55	v	Smart Systems	The Colony, Texas	\$4,659,078	150	\$31,061	16	\$291,192	Up 10%
56	v	Fusion Audio + Video	Greenville, S.C.	\$4,600,000	125	\$36,800	20	\$230,000	Up 10%
57	v	Desert Valley Audio Video	Scottsdale, Ariz.	\$4,400,000	500	\$8,800	25	\$176,000	Up 15%
58 (T)	v	World Vision	Columbia, S.C.	\$4,350,000	122	\$35,656	8	\$543,750	Up 10%
58 (T)	v	Automated Environments	Mesa, Ariz.	\$4,350,000	125	\$34,800	25	\$174,000	Up 10%
60	v	Digital Interiors	Lake Balboa, Calif.	\$4,332,494	47	\$92,181	6	\$722,082	Up 20%-30%

e = ESTIMATED CUSTOM REVENUES AND INSTALLATIONS